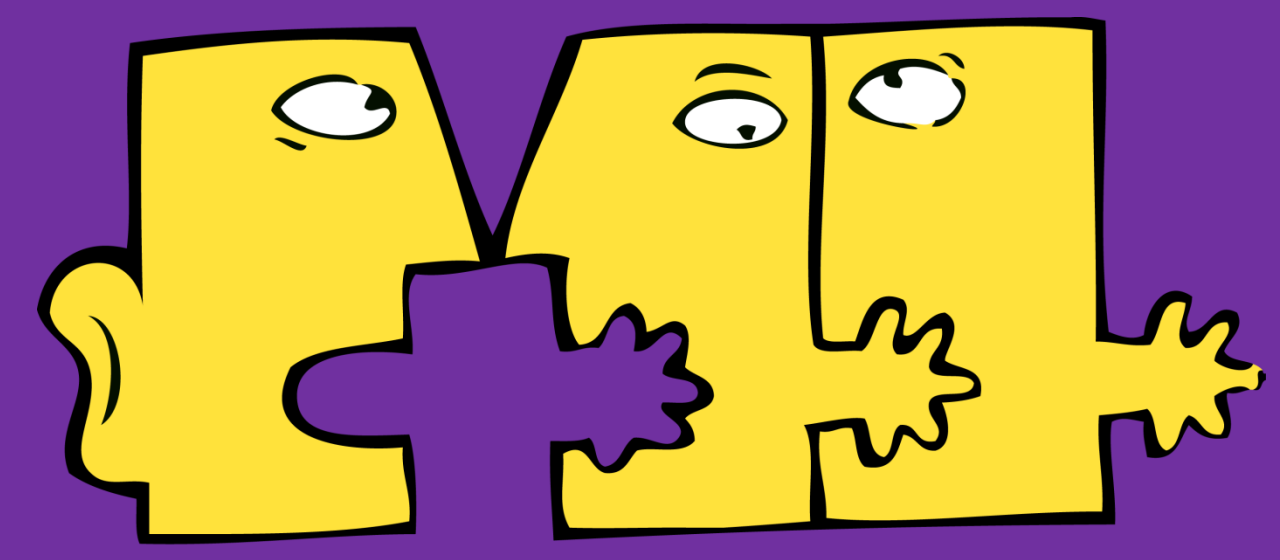




Database for Research



手語及聾人研究中心
Centre for SIGN LINGUISTICS & DEAF STUDIES

Hong Kong Sign Language Browser <http://www.csls.org/hkslbrowser/>

- Records variations of lexical signs in Hong Kong Sign Language and their sociolinguistic background (frequency of usage, age range of users, origin of signs, etc.);
- Promotes Hong Kong Sign Language and dispel the misconceptions about sign languages;
- Supports future sign language related activities such as sign interpretation and deaf education;
- Develops database of different modules, such as legal, medical and technological disciplines, in order to support professions related to sign language.

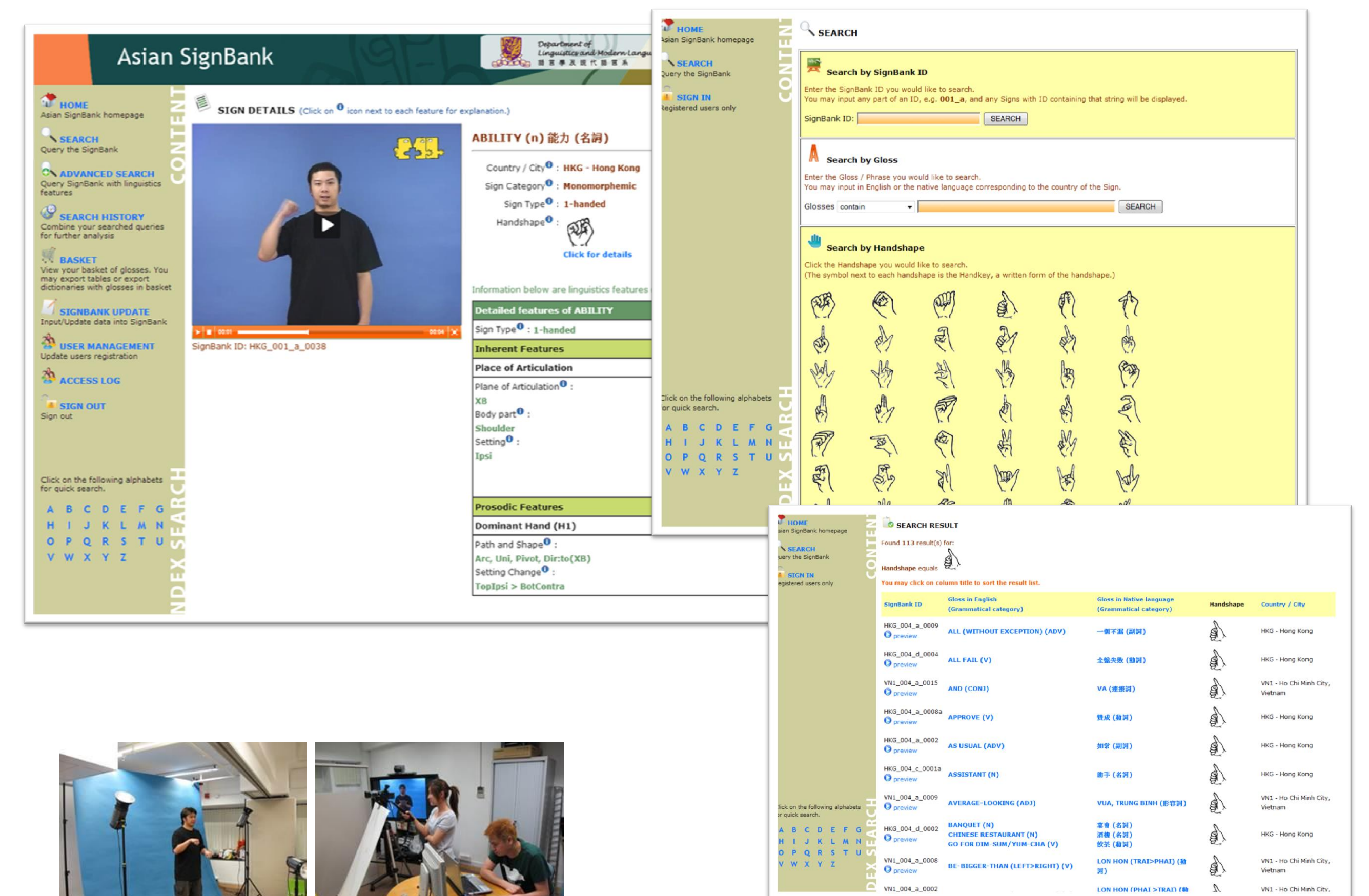


Sponsored by



Asian SignBank www.csls.org/asiansignbank

- Archives endangered sign languages in Asia;
- Supports sign language teaching and material development through automatic compilation of materials;
- Compares the properties of different sign languages;
- Helps sign language research and analysis;
- Shows the importance of collaborative research between deaf and hearing researchers.

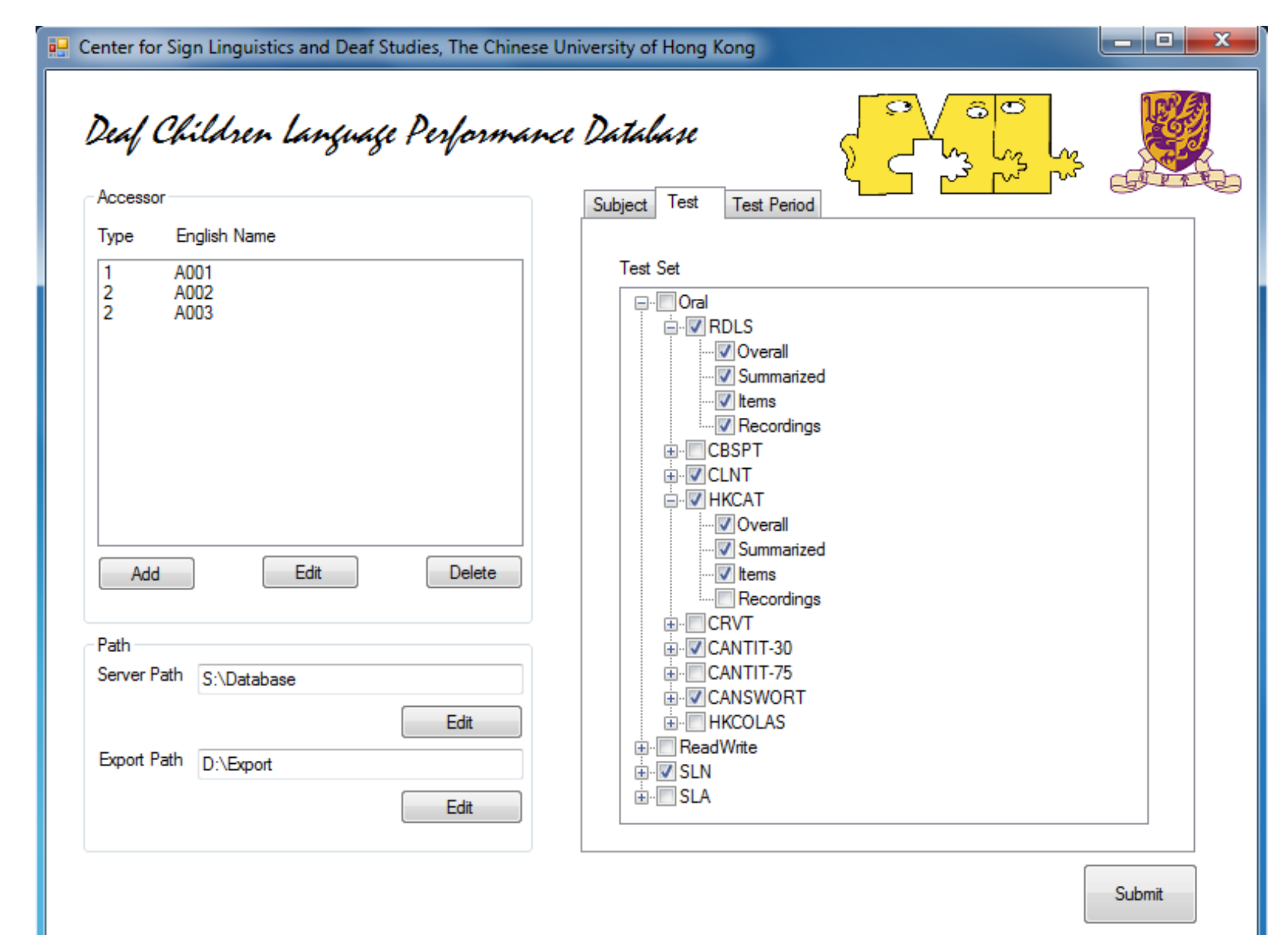


Sponsored by



Deaf Children Language Performance Database

- Stores the language performance data of deaf children in Hong Kong;
- Includes data from students in mainstream school and students in Jockey Club Sign Bilingualism and Co-enrolment in Deaf Education Programme;
- Includes about 20 tests, accessing the performance in spoken language, literacy, and sign language;
- Includes sound clips and videos in some tests.



Sponsored by



香港賽馬會慈善信託基金
The Hong Kong Jockey Club Charities Trust



賽馬會手語雙語共融教育計劃
JOCKEY CLUB SIGN BILINGUALISM AND
CO-ENROLMENT IN DEAF EDUCATION PROGRAMME

We welcome collaboration

Interested parties are welcome to contact us for collaborative research