



Hong Kong Sign Language Corpus

Transcription System

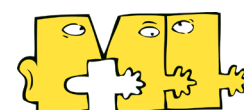
20.12.2022 version

Tiers	
Gloss 1	For main transcription
Gloss 2	Used when separating two hands are necessary
Mouthing	Mouthing
Remarks	Write down questions or comments

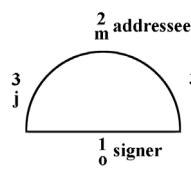
Sign	
Beginning of a sign	When the handshape is clearly formed
Ending of a sign	a) When the hand begins to move away from the original location; b) When the handshape begins to change.

Typing Sequence	
SIGN@x[=[...][=?...][“][*][*...][%...][x N]	
N.B. ■ indicates a space	

Meaning	Symbols	Glosses	Descriptions
Signs	SIGN	GO FROG	
Unintelligible signs / gestures / index	XXX	XXX gesture [= xxx] IX_obj [= xxx] IX [= xxx]	
Signs which are pending for a meaning gloss	ZZZ	ZZZ [= WHAT]	
Gestures	gesture	gesture [= get someone's attention] gesture [= play toy]	



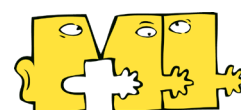


Meaning	Symbols	Glosses	Descriptions
Index signs	IX_	IX_obj [= a book] IX_loc [= kitchen] IX_evt [= younger sister cries] IX-a [= a dog] IX_CL IX_cmd [= go there] IX_sign [= FISH] IX_ges [= nodding] IX_all [= books] IX_which [= books] IX_hesitate	obj: real objects loc: location evt: event a/b/c: discourse reference CL: classifier handshape cmd: commands ges: gesture all: involve a path hesitate: filler for thinking
1 – 1st person 2 – 2nd person 3 – 3rd person	(p = plural)	IX_1 IX_1p IX_2 IX_2p IX_3 IX_3p	pointing pronouns
Classifier Predicates	CL_sem CL_sass CL_hand CL_body +	jump+CL_sem:person [= a person jumps] squarish+CL_sass:picture [= square picture] hold+CL_hand:sword [= hold a sword] bite+CL_body:shark [= the shark bites] g1: jump+CL_sem:person [= a person jumps up from the table] g2: be_located+CL_sass:table	sem: semantic CL sass: size and shape CL hand: handling CL body: bodypart CL <i>*Please refer to Hong Kong Sign Language: A trilingual dictionary with linguistic descriptions (Tang, 2007) for an inventory of classifier handshapes.</i>
Location markings	-a, -b, -c	PUT-a ONE-a TWO-b	directed to actual locations
Location associated with verb agreement	-o, -m, -i, -j	*Different codes in utterance search: 2m-GIVE-1o GIVE-2S&Sub-1S&Obj GIVE-3i GIVE-3S&Obj a-GIVE-2m a-GIVE-2S&Obj 1o-GIVE-b GIVE-b-1S&Sub	





Meaning	Symbols	Glosses	Descriptions
Contracted form markings / fast-signing	~	DO~WHAT IX_obj~WHAT [= picture;what]	the descriptions are separated by a semicolon ';' and a space
Descriptions of index, gesture and CL	[=]	gesture[=[play toy] IX_obj[=[picture]	
Comments Use a semicolon ';' and a space to separate the comments, e.g. [% idiosyncratic;rs]	[%]	OWL[%compound sign] HOUSE[%meaning: go home] EAT[%plural] NOT[%idiosyncratic] IX_1[%assimilation with GOOD] SWEETS[%slip of the hand] 1o-GIVE-2m[%rs] FINISH[%one-handed] EAT[%two-handed] KISS[%self-correction] IX_1[%extended thumb] SIGN_CLEARLY[%m:adverbial] PLAY[%hesitation] REMEMBER~GOOD[%signed Cantonese]	for different meanings quantified / reduplicated signing rs: role-shift one-handed / two-handed: without holding any materials m = manual; nm = non-manual
Alternative transcription	A [= ? B]	EAT[=?FOOD]	The best guess is put in A while the B is an alternative transcription.
Incomplete signs	&	&SWEETS	Incomplete produced signs
Substitution of signs	A [*B]	BLUE[*GREEN]	The signer signs A which intended to mean B.
Repetition of the same signs	[xN]	EGG[x5]	repeated without any quantification / reduplication meaning
Incorrect form markings	[*]	SWEETS[*]	
Continuous holding	>	Gloss 1: ELDER_BROTHER > Gloss 2: IX_3	The holding marker > is in an independent annotation
Family-specific form markings	@f	DUCK@f	





Meaning	Symbols	Glosses	Descriptions
Fingerspelling – English words	@k	MAN@k BRENDA@k	
Mouthing	mouth	梁家福 leung_ka_fu	mouth would be typed onto 'Mouthing' tier; all the data will be transcribed by <i>Chinese character</i> and compensated by <i>Jyutping</i> .
Delimiters	. ? ! +/. ,	SIT . SIT ? SIT ! SIT +/. SIT ,	declarative sentences questions imperatives incomplete utterance a smaller break between propositions * Delimiters appear in the last gloss of the sentence in either g1 or g2

